

AI DELIVERY ROBOT

# LUCKIBOT

YOUR RELIABLE ASSISTANT

[incrobotics.com](http://incrobotics.com)



## PRODUCT DESCRIPTION

LuckiBot is an AI delivery robot that can be deployed in over 20 different scenarios. It ensures precise pickup and offers an immersive interactive experience. The robot excels in dynamic promotion and can provide various customer services. Its new visual SLAM algorithms enhance its movement efficiency, making it a reliable assistant.

Overall Size	526 mm × 493 mm × 1320 mm
Net Weight	38 Kg
Loading Space	3 Tiers /4 Tiers adjustable, the area of each tier is 0.18 m <sup>2</sup>
Tray Load	Single tray loads 10 Kg, maximum 40 Kg in total
Hardware Platform	Qualcomm 8 -core chip + 32 -Bit Microchip MCU+ Depth vision sensor Hardware Platform
Battery Life	10 H (Typical cruising scene)
Charging Time	4.5 H
Network Supports	4 G supports TDD-LTE, FDD-LTE WiFi supports 2.4 G/5 G
Navigation System	LiDAR + Visual Positioning + Visual Obstacle Avoidance + Odometer + IMU
Navigation Method	LiDAR SLAM Solution (In cruising mode), LiDAR + Vision Combination SLAM Solution Navigation Method

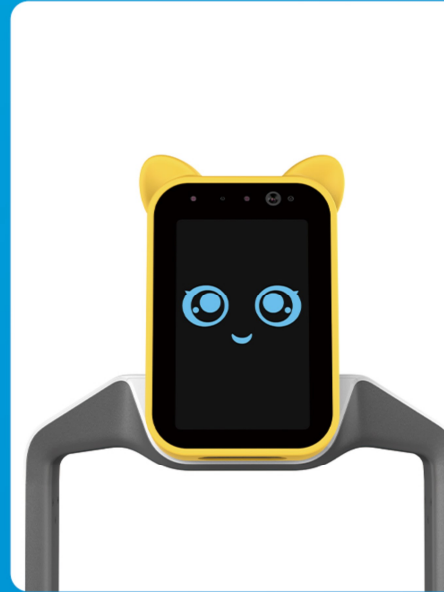


## I DETAILS



### Wide-open Large Tray

- 43\*50 cm large layers to fit in as many dishes you want.
- Adjustable layers that fit all delivery needs.



### Accessories

- Robot headgear and body stickers make your machine more personal and can attract more customers.
- The cup holder can firmly hold the cups in the slot, ensuring stable operation on any terrain without spilling any liquid.



### Multi-link Vehicle Suspension

- Auto-level independent linkage suspension system with high effectiveness to avoid bumps.
- Stable operation in various difficult environments such as uneven and greasy ground.



### Food Protector

The fully transparent acrylic material is easy to clean, disinfect, assemble and disassemble, with airtightness up to 80%, which can ensure the safety and hygiene of the delivery process.

## FEATURES



### Stable Delivery

- LuckiBot has a remarkable capacity to deliver more than 400 dishes per day.
- With its double carrying capacity compared to manual delivery with high efficiency.



### Multiple Collection

- LuckiBot in collecting and delivering goods, taking on the heavy lifting, reduces the time spent on round trips.
- It supports one-time returns for multi-places.



### Diversified Promotion

- LuckiBot can greet customers at a fixed point, or move around to attract customers.
- It can perform various tasks, display advertisements and recommend signature dishes proactively, and distribute snacks while customers wait.



### Secondary Development Supported

- The system has strong openness for secondary development and provides comprehensive interfaces.
- Exclusive plug-in-based technology, reducing the threshold for secondary development skills.

## ALL SCENARIOS COVERED



Restaurant



Supermarket



Factory



Nursing home



Hotel



Club



Office



Hospital

## PRODUCT CORE CAPABILITY



## Positioning and Navigation

Built-in 210° LiDAR + 3D omnidirectional obstacle avoidance sensor achieves safer operation.

Built-in RGBD depth camera can detect small obstacles quickly and accurately.

LiDAR + Vision Combination SLAM Solution Navigation Method ensures the robot can accurately detect and stop when encountering obstacles with a response time as short as 0.5 seconds.

## Voice Interaction

LuckiBot is equipped with a 6-microphone ring array and 360° coverage, allowing for accurate pickup and clear, high-quality sound.

Its powerful AI voice capability ensures seamless performance even in noisy environments with up to 75dB of ambient noise.

With a remarkable 97% accuracy rate for AI voice recognition, LuckiBot delivers exceptional voice recognition capabilities.

